

THE BARTON CENTER

APRIL NEWSLETTER

2025



BARTON
COMMUNITIES
ACTIVITY CENTER

216-221-3400
14300 DETROIT AVE.
LAKEWOOD, OH 44107

WWW.BARTONCOMMUNITIES.ORG

BARTON CENTER CONTACTS

Allison

Executive Director

216-521-7260 ext. 128

aurbanek@bartoncommunities.org

Christina

Lead Activities Coordinator

216-221-3400 ext. 136

cstover@bartoncommunities.org

Rachel

Activities Coordinator

216-221-3400 ext. 134

rdawson@bartoncommunities.org



**Barton Center offices will be closed
on Friday, April 18 for the holiday.**

**Would you like the newsletter delivered to
your email each month?**

See Christina or email her at:

cstover@bartoncommunities.org



BARTON CENTER SHOPS

The Library

Hours: Monday - Friday
9 a.m. - 8 p.m.
Key FOB Entry

Salon & Barber Shop

Hours: Thursdays & Fridays
9 a.m. - 2 p.m.
Call: Chris Fordyce to schedule
appointment.
(216) 287-6634

The Corner Store

Hours: Monday 10 a.m. - 12 p.m.
Tuesday - Thursday 10 a.m. - 3 p.m.

Book Nook

Hours: Tuesdays & Thursdays
9:30 a.m. - 2:30 p.m.

Hodge Podge Resale Shop

Hours: Monday 5 p.m. - 7 p.m.,
Wednesday 9 a.m. - 2:30 p.m., &
Thursday 6 p.m. - 8 p.m.



\$7 Lunch Delivery

Residents can choose from two options that will be delivered each Thursday at 11:30 a.m.

Residents are required to pre-pay for meals by 12 p.m. noon on Tuesday each week.

Meals can be prepaid at The Corner Store.

April 3 Menu:

White bean & sausage chili, apple coleslaw, corn muffin, and Funfetti sugar cookie.

April 10 Menu:

Swedish meatballs, buttered and parslied egg noodles, crudité w/ dip, green beans, and chocolate cake w/ buttercream.

April 17 Menu:

Chicken salad sandwich, minestrone soup, green salad w/ Italian dressing, and banana bread w/ cream cheese glaze.

April 24 Menu:

Roasted herb chicken on the bone, rice pilaf, marinated cucumbers, and a snickerdoodle.



April Movie Days

Vote for your pick in the Carr Lounge. Popcorn is provided at each movie!

The Apartment vs. Some Like It Hot

When: Monday, April 7

Where: Faulhaber Auditorium

Time: 2 p.m. - 4 p.m.



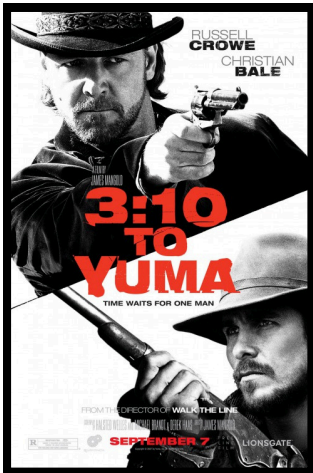
3:10 to Yuma vs.

Hell or High Water

When: Monday, April 14

Where: Faulhaber Auditorium

Time: 2 p.m. - 4 p.m.



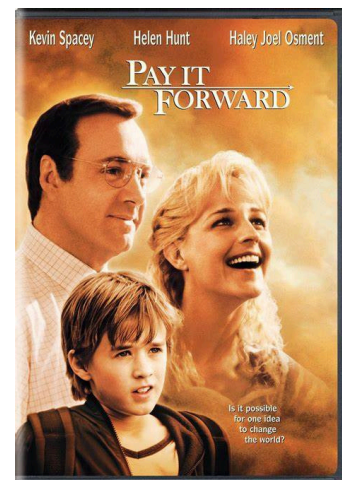
Secondhand Lions vs.

Pay It Forward

When: Monday, April 21

Where: Faulhaber Auditorium

Time: 2 p.m. - 4 p.m.



Gravity vs. Interstellar

When: Monday, April 28

Where: Faulhaber Auditorium

Time: 2 p.m. - 4 p.m.



April Crafts

Bird House Painting

When: Thursday, April 3

Where: Craft Room

Time: 1 p.m. - 3 p.m.



Rock Painting

When: Thursday, April 17

Where: Craft Room

Time: 1 p.m. - 3 p.m.



Fabric Flowers

When: Thursday, April 10

Where: Craft Room

Time: 1 p.m. - 3 p.m.

Beeswax Wraps

When: Thursday, April 24

Where: Craft Room

Time: 1 p.m. - 3 p.m.

**We will be selling these at the Art Fair
this summer!**

**Residents MUST pre-register for ALL
crafts on the Craft Room door.
See Barton Staff with questions!**

April Activities

Food Box Distribution -

Cleveland Food Bank

When: Friday, April 4

Where: Cafe

Time: 10 a.m. - 2 p.m.

You must pre-register.

Contact: Christina at (216) 221-3400 ext. 136



Craft Show Conversation

When: Thursday, March 10

Where: Cafe

Time: 3 p.m. - 3:30 p.m.

Are you interested in helping to plan a craft show? Join us in the Cafe and come share your ideas!



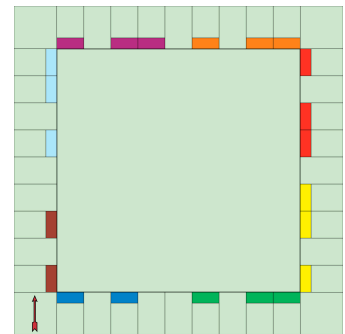
Board Game Day

When: Monday, April 14

Where: Cafe

Time: 2 a.m. - 4 p.m.

Join us in Cafe to play card and board games with staff and friends!



PCs for People

When: Wednesday, April 16

Where: Cafe

Time: 10 a.m. - 12 p.m.

Join us in the Cafe to sign up for Wifi or ask internet questions.



O'Neill Diabetes Lunch & Learn

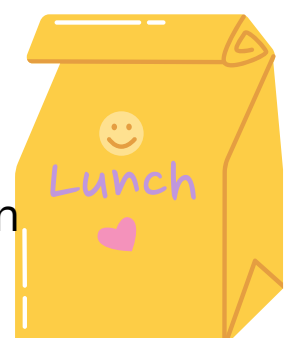
When: Wednesday, April 16

Where: Cafe

Time: 12 p.m. - 1 p.m.

Join us in the Cafe for an informational presentation on living with diabetes. Lunch is provided.

Must sign-up with staff.



April Activities

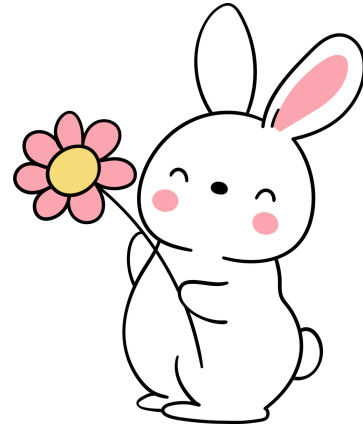
Bunny Games

When: Monday, April 21

Where: Cafe

Time: 2 p.m. - 3 p.m.

Join us in the Cafe for spring-themed games and fun!



Mikey Klein - Piano

When: Thursday, April 24

Where: Cafe

Time: 11:30 a.m. - 12 p.m.

Join us in the Cafe for a musical performance from local middle schooler, Mikey! All are welcome!



April Birthdays & Fishbowl Gameplay

When: Friday, April 25

Where: Cafe

Time: 3 p.m. - 4 p.m.

Join us in the Cafe for cake and a new game! All are welcome!



Girl Scout Talent Show

When: Sunday, April 26

Where: Cafe

Time: 10:30 a.m. - 11:30 a.m.

Join us in the Cafe for a talent show put on by local Girl Scout troop. All are welcome!



April Activities

Left, Center, Right Game Day

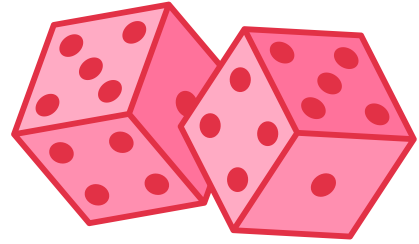
When: Wednesday, April 30

Where: Cafe

Time: 2 p.m. - 3 p.m.

Come join us in the Cafe to play LCR!

All are welcome!



Seated Rhythms & Seated Tap Classes

When: Wednesdays, April 2 & 16

Where: Greenhouse

Time: 11:30 a.m. - 12:15 p.m.

Join us in the Greenhouse for seated dance and tap classes. All are welcome!

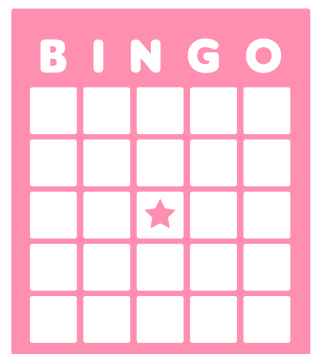
Prize Bingo

When: Wednesdays, April 2 & 16

Time: 4 p.m. - 5 p.m.

Where: Cafe

Come join friends and win fun prizes!



M2B2 Band Rehearsals

When: Thursdays, April 3 & 17

Where: Faulhaber Auditorium

Time: 7 p.m. - 9 p.m.

All are welcome!



**SENSORY-FRIENDLY DANCE
PERFORMANCE FOR ALL AGES**

When: April 4

Time: 10 a.m.

Where: Beck Center

We have **10 tickets** available for this event. Transportation is provided. It is first come, first served. Please see Barton staff to reserve your ticket.

We Can Help



You MUST sign up in advanced. See Barton Staff to sign up for a 15-minute slot.

Sign Up to receive Free One-on-One Tech Support with IConnect

**Date: Tuesday, April 17 & 29
Time: 2 p.m. - 4 p.m.
Where: Cafe**

- ❑ Questions on your new device?
- ❑ Need help downloading games or apps?
- ❑ Want to know how to check or send email?
- ❑ Want to watch a movie on your tablet?
- ❑ Questions on saving pictures?
- ❑ Trouble with storage?



Center Member Group Activities

Coffee With Friends



When: Every Saturday

Time: 9 a.m. - 11 a.m.

Where: Cafe

Enjoy some coffee and get to
know someone new!

Wednesday Morning Coffee

When: Every Wednesday

Where: Cafe

Time: 8:30 a.m. - 10 a.m.

To be greener, we encourage residents to bring
their own mugs for coffee.



Book Club

When: Wednesday, April 2

Time: 1 p.m. - 2 p.m.

Where: Craft Room



Lakewood Public Library: Homebound Service



When: Every Tuesday

Time: 10:30 a.m. - 12 p.m.

Call LPL Customer Service Desk by 6 p.m. the Saturday before your delivery date at: (216) 226-8275 ext. 110.

Library representative available to receive books to be returned at this time in the Cafe area.



Open Craft Room Hours

When: Every Monday

Where: Craft Room

Time: 9 a.m. - 12 p.m.

Come hang out and work on
your crafts!



Stories On Paper

When: Wednesdays,
April 9 & 23

Time: 10 a.m. - 12 p.m.

Where: Faulhaber Auditorium

Participants are given a creative prompt to write a short story that can be shared with the group. Come write and chat with us!



Friday Trivia

When: Friday, April 11

Time: 2 p.m. - 3 p.m.

Where: Cafe



Beginner's Spanish Class

When: Every Tuesday

Time: 3 p.m. - 4 p.m.

Where: Community Room

Join Irene & Esteban to learn beginner's Spanish! It is recommended that you attend weekly and bring a notebook and writing utensil to this class.

A yellow speech bubble with a black outline, containing the word '¡HOLA!' in a bold, black, sans-serif font.



Karaoke

When: Saturdays, April 5 & 19

Time: 6:30 p.m. - 8 p.m.

Where: Cafe
with Ron Walden



Janis & Tony

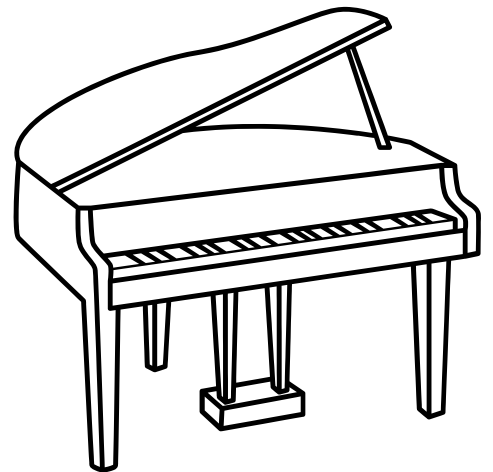
When: Sundays,
April 13 & 27

Time: 6:30 p.m. - 8 p.m.

Where: Brosky Commons

This duo performs 40's and 50's music.

Janis plays the piano, and Tony sings
standards and show tunes. All are welcome!





Janis & Peter

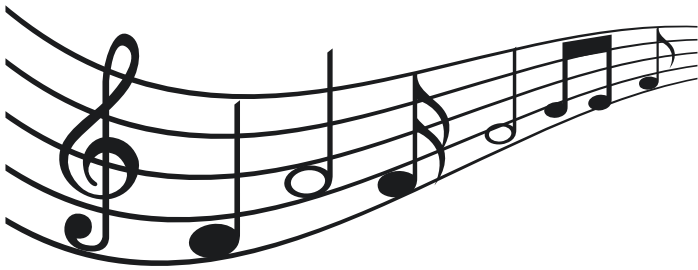
When: Thursdays,
April 10 & 24

Time: 7 p.m. - 8:30 p.m.

Where: Brosky Commons

This duo performs light classical music. Janis plays the piano and Peter plays the violin.

All are welcome!

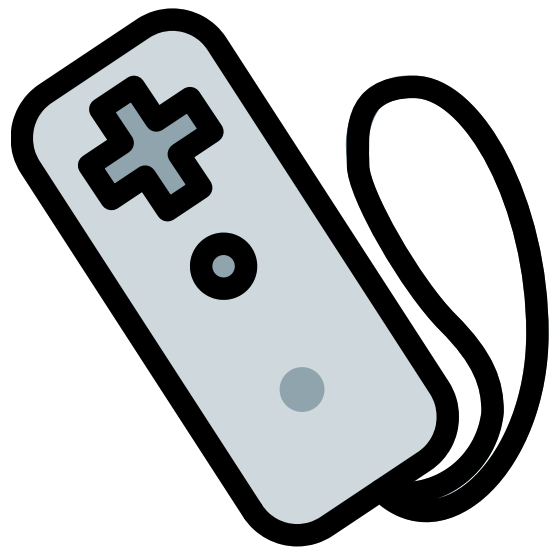


Wii Bowling

When: Wednesdays,
April 2 & 16

Time: 2 p.m. - 3 p.m.

Where: Cafe

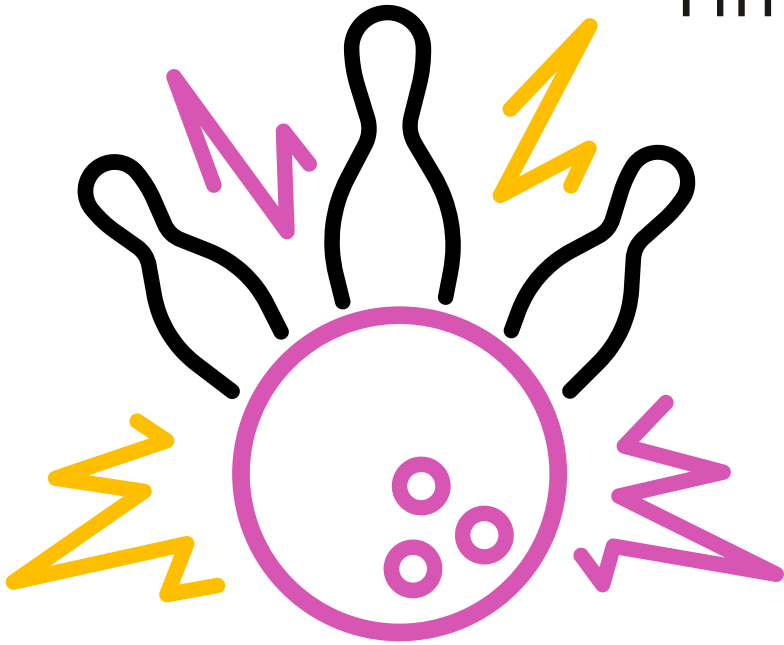


Tabletop Bowling

When: Wednesdays, April 9 & 23

Time: 1 p.m. - 2 p.m.

Where: Cafe



Creative Therapy Activities

Music & Memories Class

When: Every Thursday

Time: 2:30 p.m. - 3:30 p.m.

Where: Greenhouse
with Gavin



Art Therapy

When: Every Monday

Time: 4 p.m. - 5:30 p.m.

Where: Craft Room
with Mary



Religion & Worship Activities

Rosary Services

When: Every Tuesday

Time: 7 p.m. - 8 p.m.

Where: Community Room
with Ms. Tyburski



Bible Study

When: Wednesdays,
April 9 & 23

Time: 11 a.m. - 12:30 p.m.

Where: Community Room
with Ron Walden



Support Groups

CA Meeting

When: Every Sunday

Time: 2 p.m. - 3:30 p.m.

Where: Community Room
with Ms. Durrah

Raffle every meeting!



Health & Wellness

Activities



Free Hearing & Hearing Aid Checks

When: Monday, April 7

Time: 10 a.m. - 4 p.m.

Where: Wellness Center

Call now to schedule your appointment!

Earl Gentile - 440-333-3271

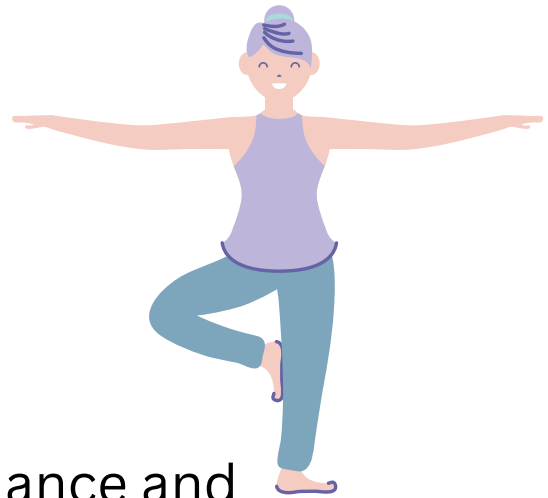
Balance Class

When: Every Monday

Time: 11 a.m. - 11:45 a.m.

Where: Greenhouse

This class is designed to improve balance and lower body strength for older adults through chair exercise. **We will focus on stability and strength exercises as well as fall prevention techniques.**



Participants can safely engage in exercises promoting muscular endurance, coordination, cognitive function, and essential skills for reducing the risk of falls.

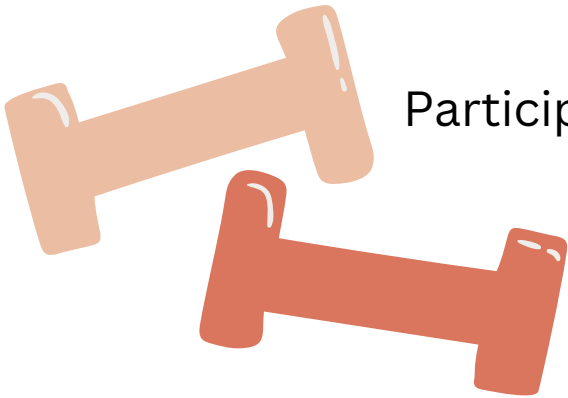
Movement & Lightweights Class

When: Every Tuesday

Time: 11 a.m. - 11:30 a.m.

Where: Greenhouse

Participants will be given 1 lb or 2 lb weights
in this seated class.

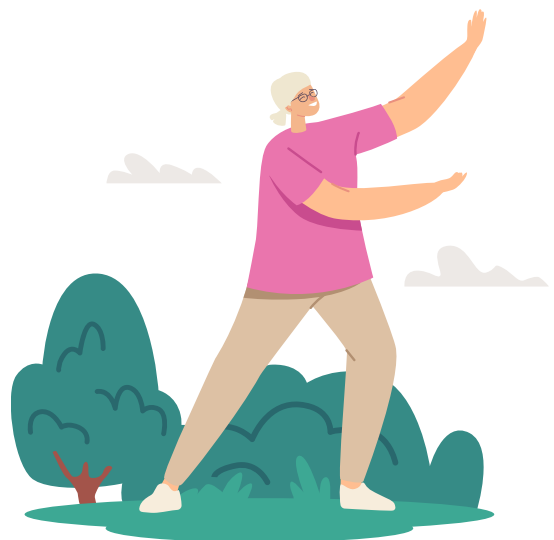


Tai Chi w/ Jan

When: Every Thursday

Time: 11 a.m. - 11:45 a.m.

Where: Greenhouse



Wellness Center Offerings

Dr. Mark Massie
Podiatrist

When: Every 3rd
Thursday

Time: 9 a.m. - 3 p.m.

By appointment ONLY
216-402-4233



Anthony Lima
Licensed Massage
Therapist

By appointment ONLY

Call or Text:
216-704-0794

Email:
GITmassage@hotmail.com

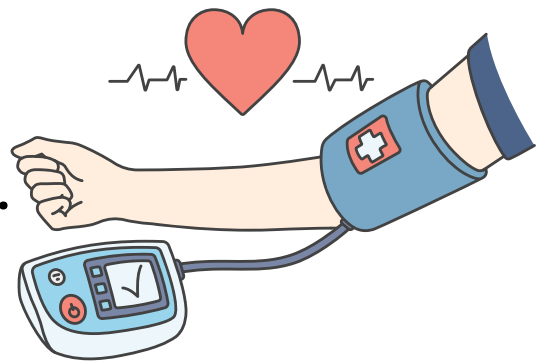


Barton Center

Wellness Corner

Neighborhood Paramedic Blood Pressure and Glucose Checks with Oliver Harper

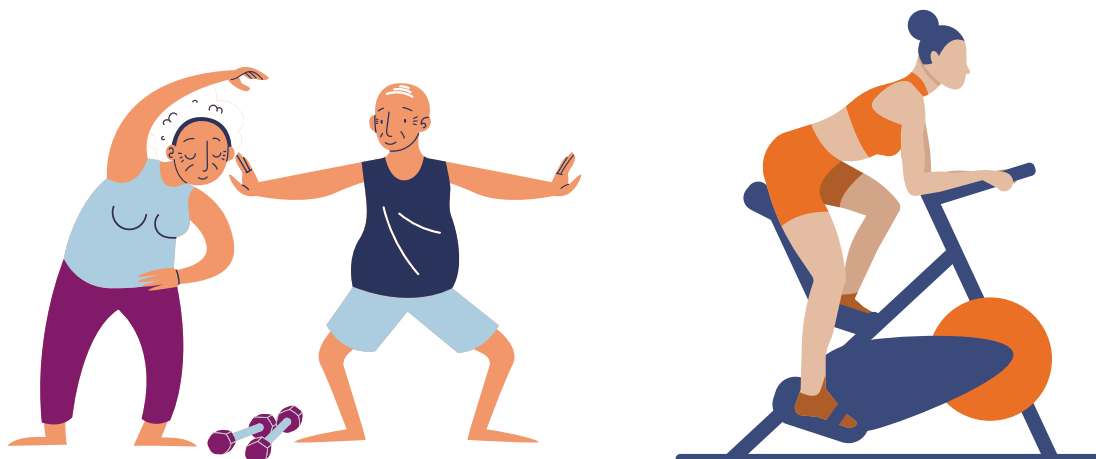
When: Thursday, April 17
Time: 10:30 a.m. - 11:30 a.m.
Where: Cafe



Fitness Center

OPEN 24 HOURS

Please see the Westerly Office, room 110, to sign a waiver and activate your fob. **A waiver must be completed prior to using the Fitness Center.**



Barton Center

Transportation Services



(216) 221-4282

COST: \$2 one-way \$4 roundtrip

Monday - Friday 9 a.m. - 11:15 a.m.

1 p.m. - 3:15 p.m.

Must book in ADVANCE

Westgate Trip:
Wednesday, April 9

Must be able to get in and out of the car independently. The Barton Center is not responsible for any **lost, stolen or damaged items.**

You must be on time for your ride, or the car will leave without you!!

Barton transportation reserves the right to refuse rides based on resident behavior.



What is The Food Ambassador Program?

- It's a program designed to engage seniors in discussion about food and health.
- We combine food, education and fun to show you how making healthy food choices can lead to a healthy, longer life

Join Us on **Thurs., Apr. 24th**

90 MINS OF:

- FOOD BINGO
- PRIZES
- NUTRITION EDUCATION
- And of course YUMMY HEALTHY SNACKS

1 pm to 2:30 pm

Where: BC Dining Room

What we provide to seniors?

1. CCHAP* Meals on Wheels food delivery program
2. Medical Nutrition Therapy (MNT)- by our Licensed Dietitian's
3. CCHAP Emergency Meals Program

*CCHAP- Crisis Chronic Health and Acute Prevention



(216) 777-2136
(216) 727-0023

www.collabstation.org
www.cchapfood.org

STOP BULLYING

Friday, April 25 | 12 p.m. - 1 p.m.

Enjoy a complimentary lunch while gaining valuable insights from O'Neill Healthcare's social worker, Makenzie Nelson, on recognizing, preventing, and addressing bullying among seniors. Learn how to foster a more inclusive and supportive community for all!

WHERE: Barton Center Dining Room

YOU MUST REGISTER IN ADVANCE

Sign up sheets located at the Transportation Desk. Contact your service coordinator with Questions!



(440) 808-5500 | ONeillHC.com

GREATER CLEVELAND
FOOD BANK

Cooking Demonstration

LEARN HOW TO COOK FOR ONE



DATE: 05/09/25

TIME: 1:30PM-2:30 PM

LOCATION: BARTON

CENTER DINING

ROOM

**SIGN-UP AT THE
BARTON CENTER**

RAFFLE TO GIANT EAGLE